

Tourism in Cyprus

How Can architecture redefine Hospitality and Travel?



Myself

Gabriel Pavlides

Associate, Architect at Foster + Partners

Undergrad, Bartlett School of

Architecture Postgrad, Oxford Brookes

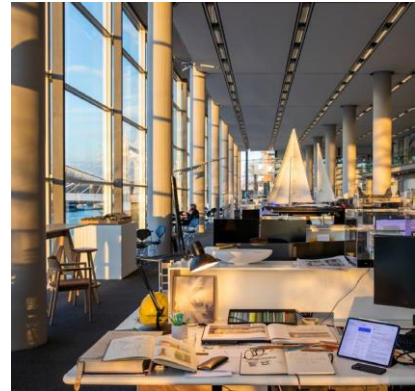
University Experience:

- Airport Masterplan and Design
- Luxury Tourism
- Highrise Mixed Developments
- Middle East, Asia

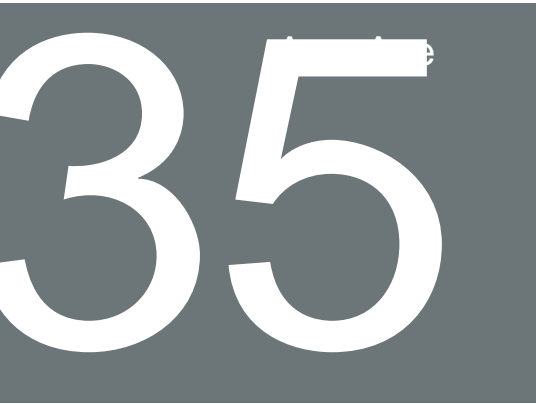
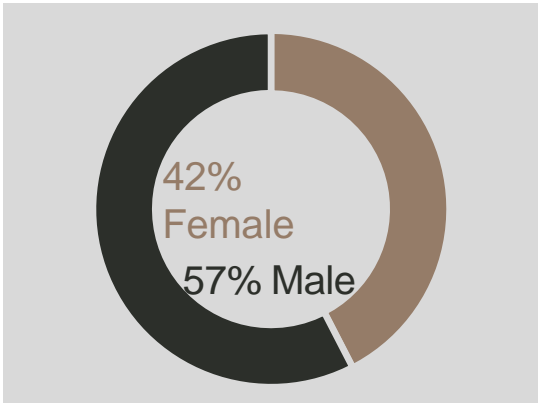


The Studio

Foster + Partners is a global studio for sustainable architecture, engineering, urbanism and industrial design, founded by Norman Foster in 1967. Since then, he, and the team around him, have established an international practice with a worldwide reputation. With offices across the globe, we work as a single studio that is both ethnically and culturally diverse.



Global
presence



18 International offices

Abu Dhabi / Bangkok / Beijing / Buenos Aires / Dubai / Hangzhou / Hong Kong / London / Los Angeles/ Madrid / New York / San Francisco / Seoul / Shanghai / Shenzhen / Singapore / Sydney / Warsaw



Integrated Design

Integrated design reflects an understanding of the wider context of a building – from the scale of the city to the door handle.

Architecture
Urban and Landscape
Design Structural
Engineering Environmental
Engineering Industrial
Design
Workplace
Consultancy
Sustainability
Research



Architectur

e



1. 30 St Mary Axe, London, UK
2. Stansted Airport – Stansted, UK
3. Bloomberg HQ, London, UK
4. Hearst Headquarters – New York, USA
5. Hongkong and Shanghai Bank HQ – Hong Kong, China
6. Apple Park – Cupertino, USA



30+ years of Hospitality Projects



Puerta America, Madrid



ME Hotel, London



Anfa Place, Morocco



Apple Park, Visitors Center, USA



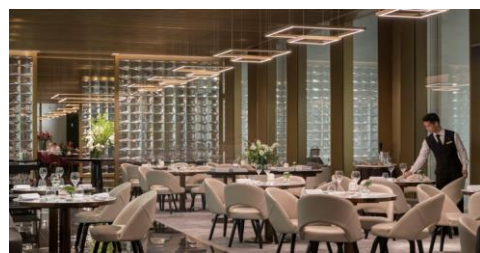
The Murrezzan, St Moritz



Capella Resort, Singapore



Kulm Eis pavillion, St Moritz



The Murray, Hong Kong



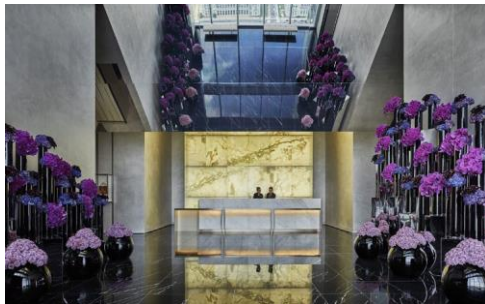
Posthaus, Switzerland



The Dolder Grand, Switzerland



Yacht Club de Monaco



Four Seasons at Comcast, USA



The Lana, Dubai



Four Twenty-Five, USA



Southern Dunes Hotel, Red Sea

Our Clients



Cyprus Greece

Foster + Partners have recently expanded their presence in Cyprus and Greece, focusing in Tourism and Residential with projects like Land of Tomorrow in Larnaka and Hellinikon Masterplan in Athens.



A satellite map of the Eastern Mediterranean region, showing the coastlines of Turkey, Syria, Lebanon, Israel, and the island of Cyprus. The sea is a deep blue, and the land is a mix of green and brown. The title 'Tourism in Cyprus' is written in large white letters, and the subtitle 'Challenges & Opportunities' is written in smaller white letters below it.

Tourism in Cyprus

Challenges & Opportunities

Recent Number

S

Despite the pandemic, the consequent economic slowdown in European and regional instability, tourist arrivals have broken records

PRESS RELEASE

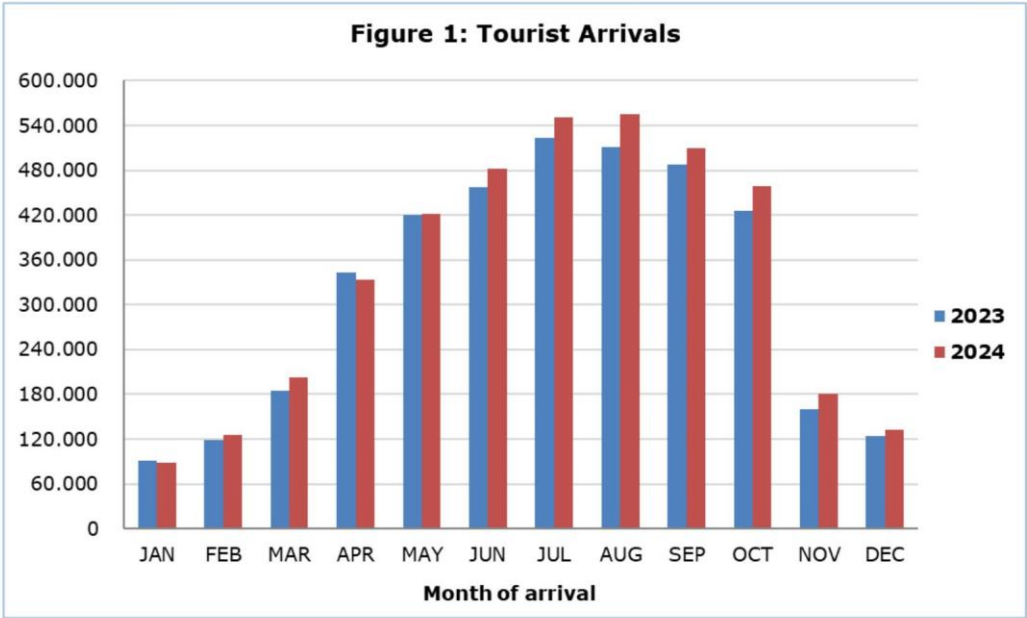
TOURIST ARRIVALS AND RETURNS OF RESIDENTS OF CYPRUS FROM TRIPS ABROAD: **DECEMBER 2024**

Tourist Arrivals 7,6% and Returns of Residents of Cyprus 9,3%

Tourist Arrivals

The arrivals of tourists reached 133.063 in December 2024 compared to 123.630 in December 2023, recording an increase of 7,6%.

For the period of January – December 2024, arrivals of tourists totaled 4.040.200 compared to 3.845.652 in the corresponding period of 2023, recording an increase of 5,1%.



Arrivals from the United Kingdom were the main source of tourism for December 2024, with a share of 23,7% (31.501) of total arrivals, followed by Israel with 17,4% (23.168), Poland with 9,4% (12.473), Greece with 9,0% (11.969) and Germany with 5,7% (7.535).

Tomorrow's Climate

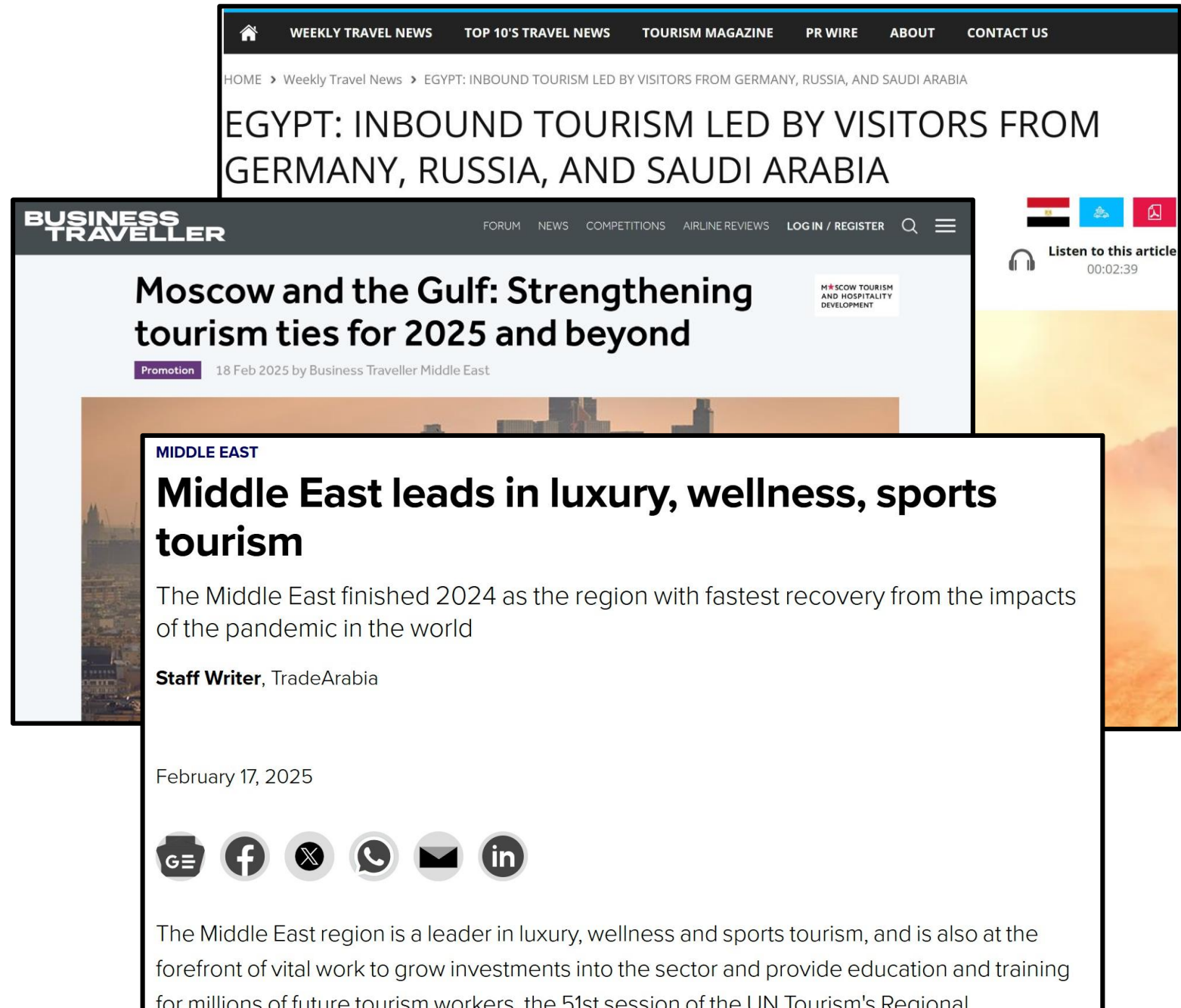
Cyprus is facing the effects of Climate Change already. What does that mean for a growing tourism industry and its effect on the environment? Can architecture and design offer solutions to this question?



The region's Future

On the crossroads of continents, Cyprus's attractive location always came with benefits and challenges.

In a region with political challenges as well as increased competition for tourism industries, can architecture help differentiate Cyprus' product and offer to set it apart?



Mixed Use, Higher Density



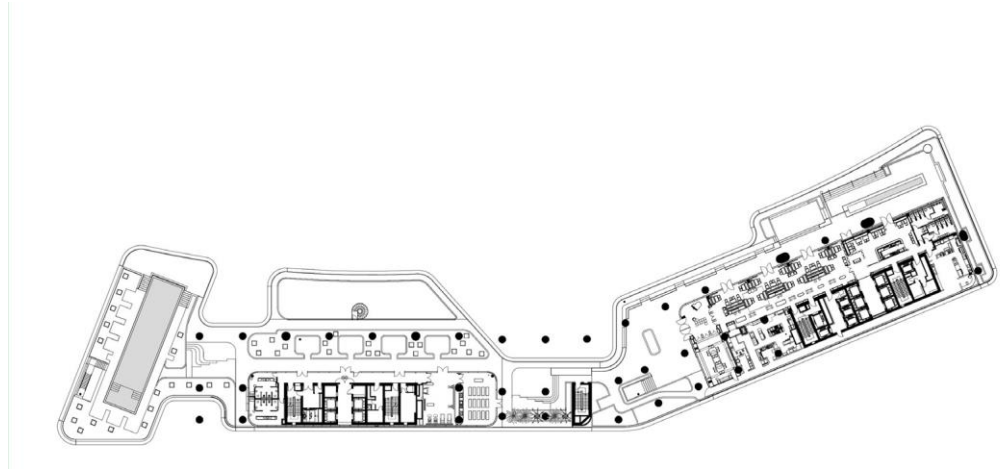
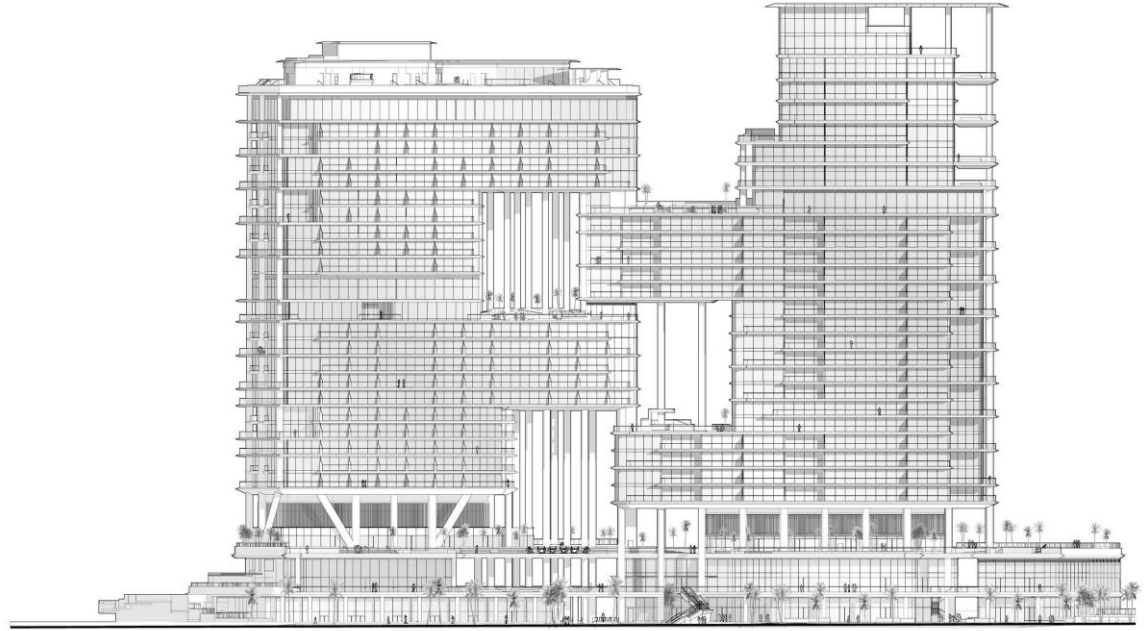
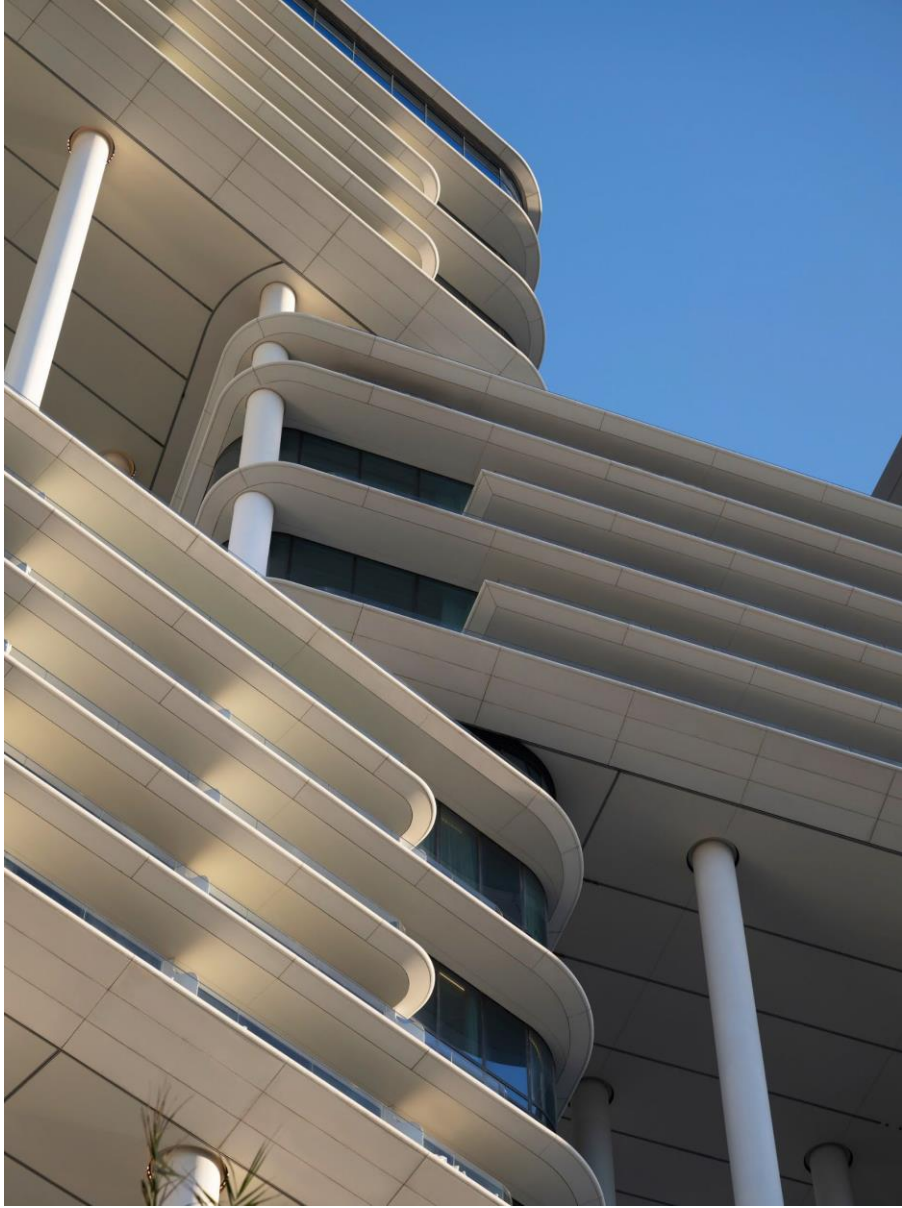
The Lana and The Residences, Dorchester Collection

Dubai, UAE 2014 – 2024



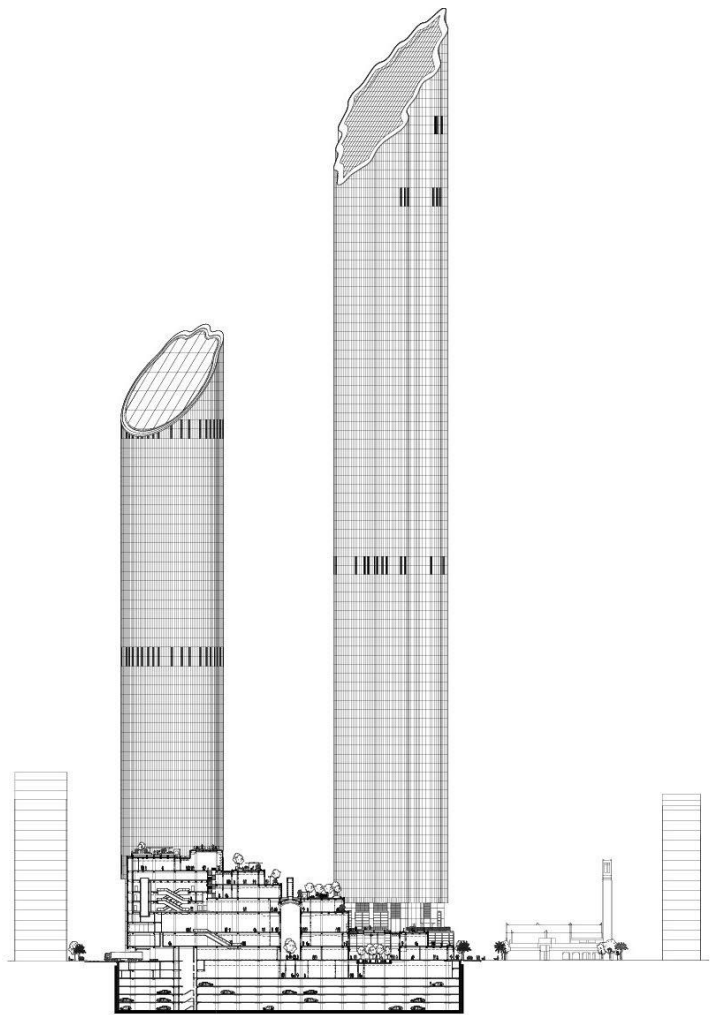








World Trade Center Souk
Abu Dhabi, UAE 2006 - 2014





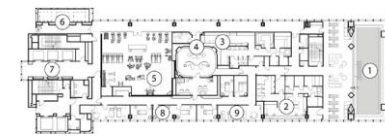
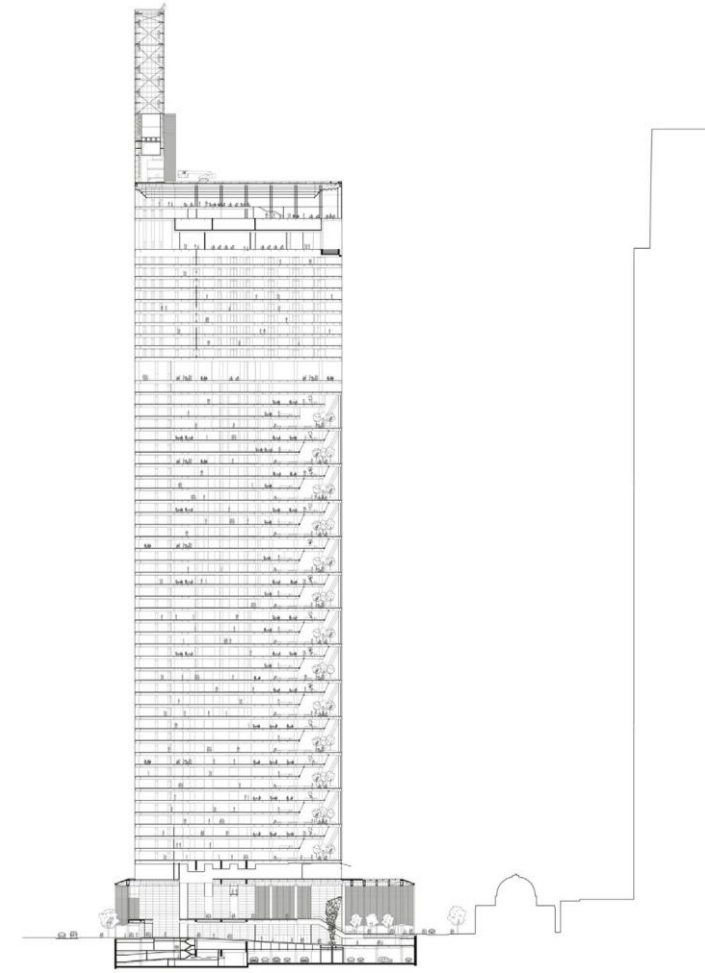




Comcast Technology Center
Philadelphia, USA 2013 – 2019

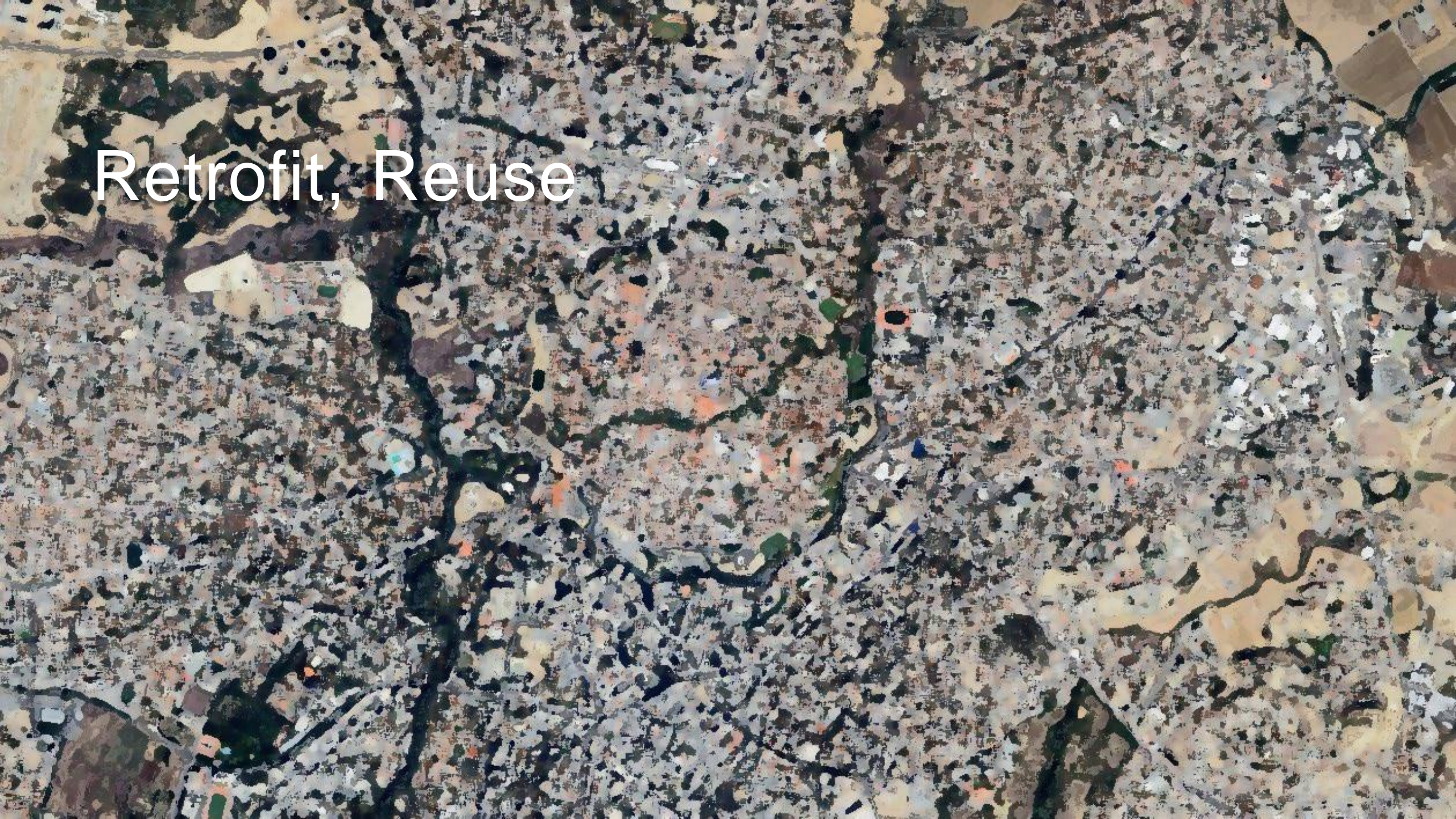






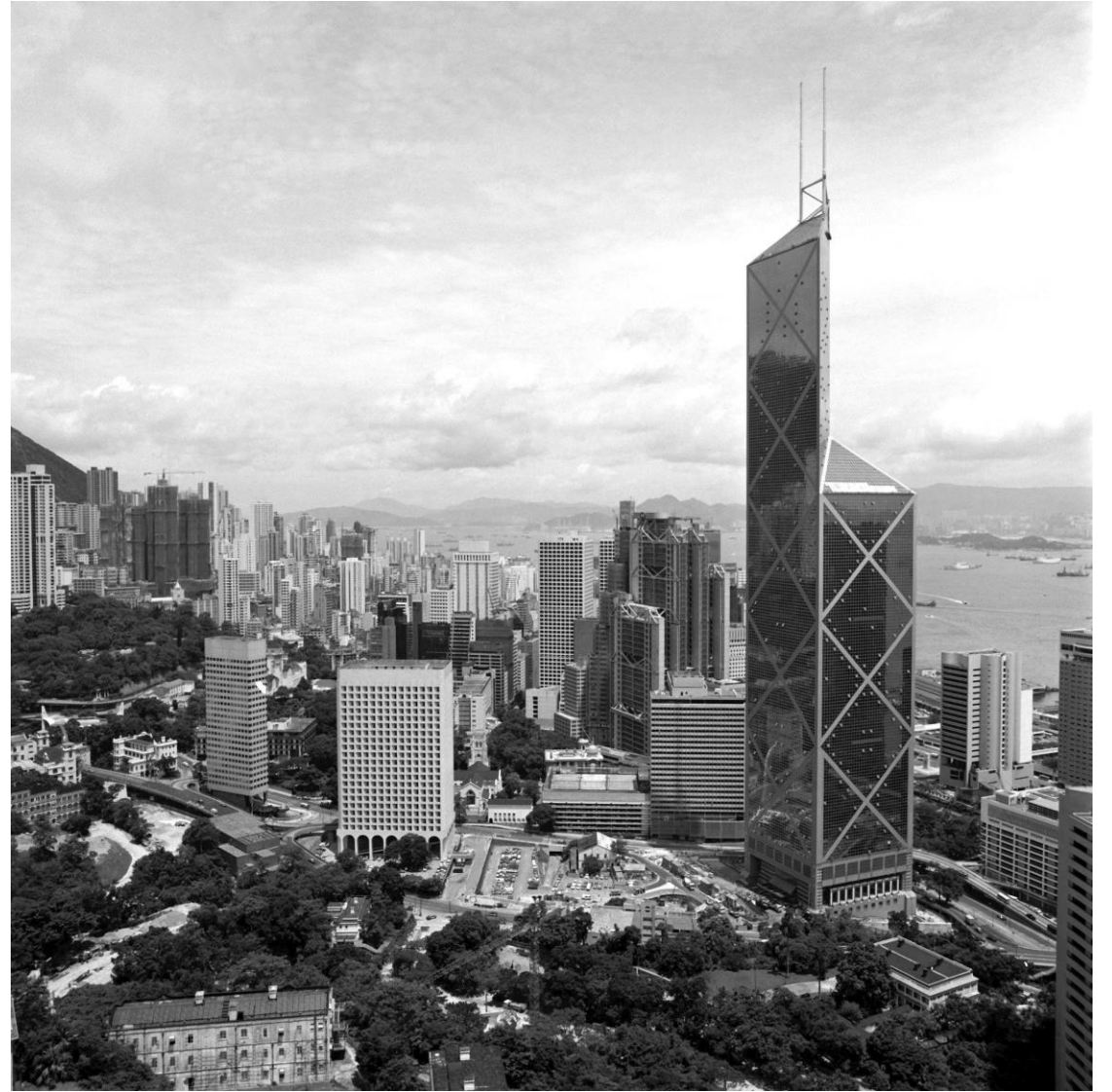
1. Pool
2. Female Changing Room
3. Male Changing Room
4. Spa Entrance
5. Fitness Centre
6. Hotel Express Elevators
7. Hotel Local Elevators
8. Treatment Rooms
9. Relaxation Room

Retrofit, Reuse





The Murray
Hong Kong, China 2013 – 2018









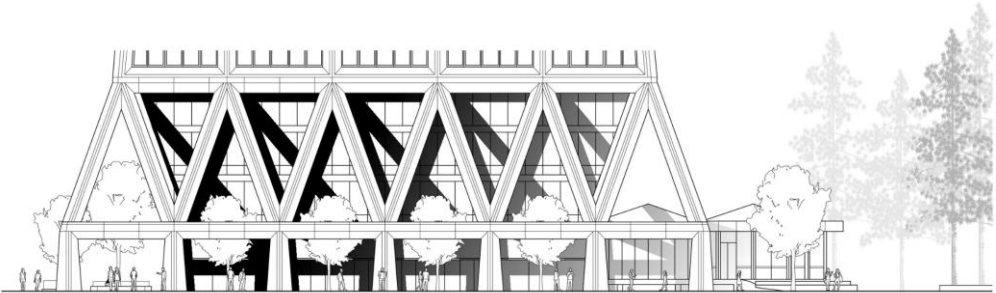
One Beverly Hills Masterplan
Los Angeles 2019 - 2027



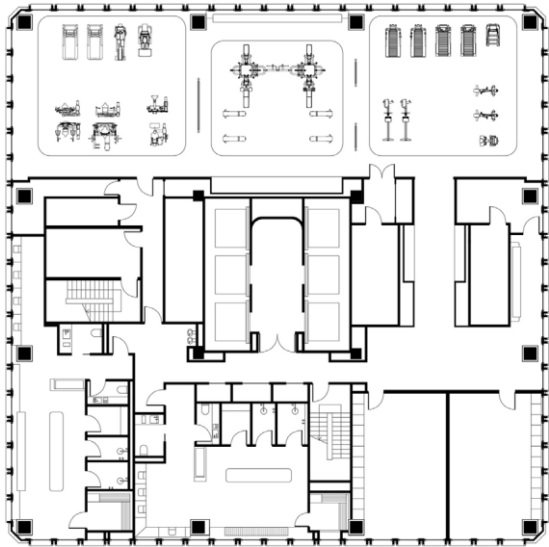




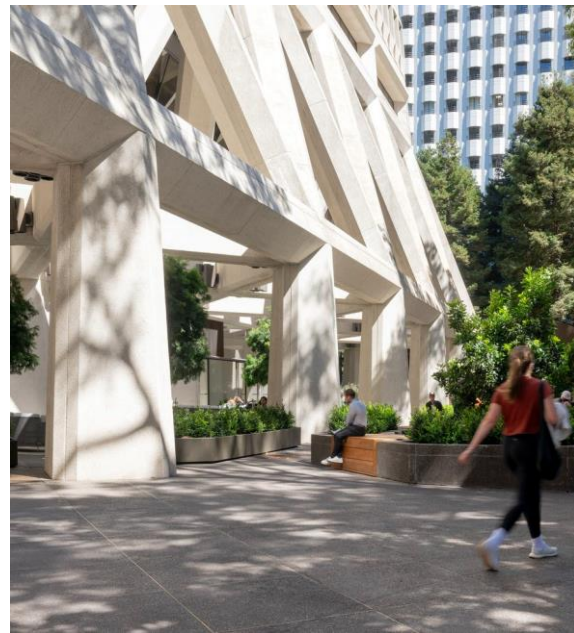
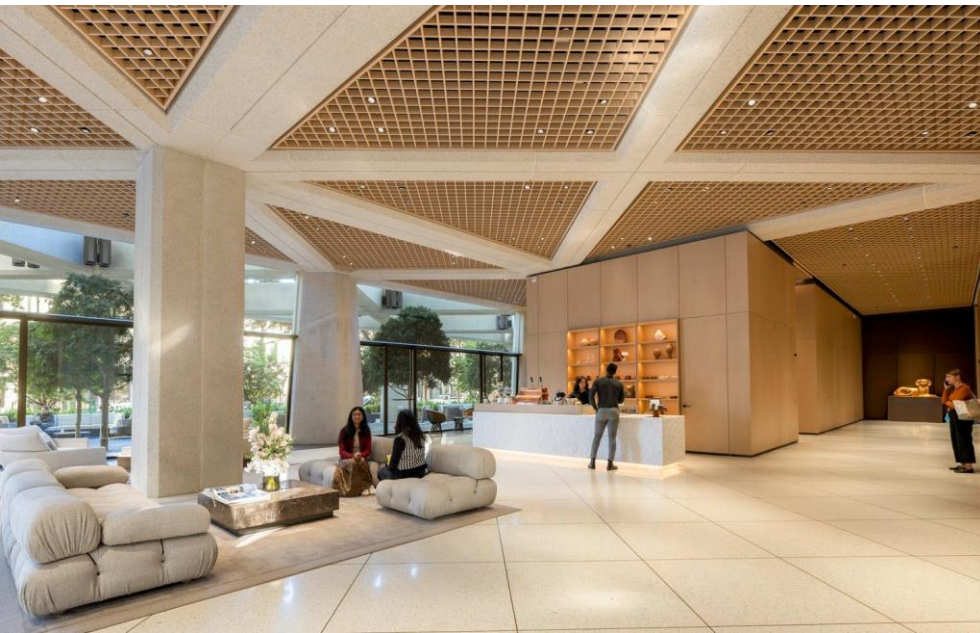
Transamerica Pyramid Center
San Francisco, USA 2020 – 2024



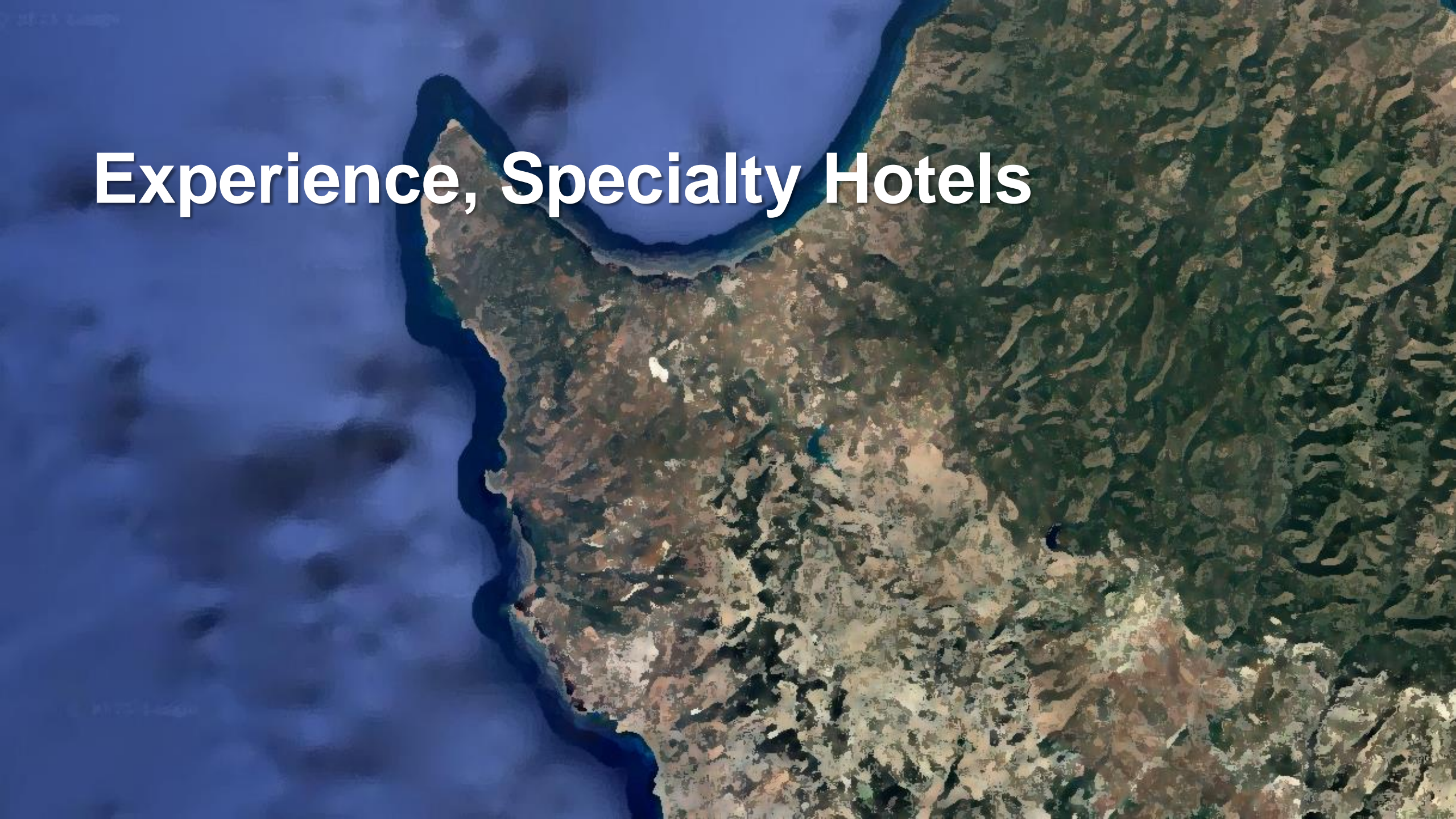
Clay Street - Elevation
0 5m







Experience, Specialty Hotels





Nujuma, Ritz Carlton
Saudi Arabia 2018











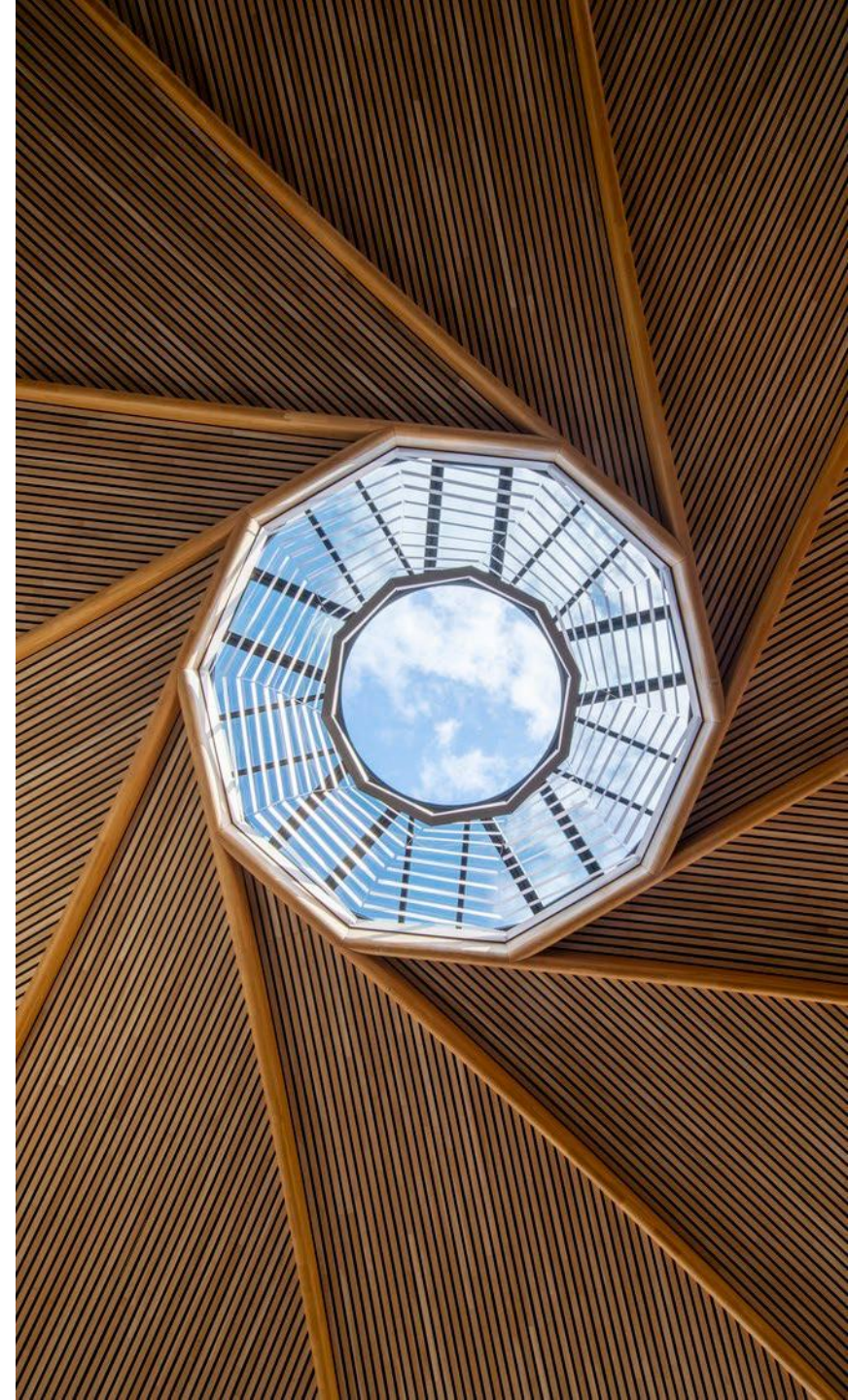
Southern Dunes
Saudi Arabia 2019







Le Dôme Winery
Bordeaux, France 2017 – 2021



An aerial photograph of a coastal city, likely San Francisco, showing a dense urban area with a grid street pattern. A large body of water, the San Francisco Bay, is visible on the right side of the image. A bridge, the Golden Gate Bridge, is visible in the lower right corner, crossing the water. The text "Masterplans, Transport driven" is overlaid on the image in a white, sans-serif font.

Masterplans, Transport driven

45+ years of Masterplan experience



Masdar City, Abu Dhabi



Crossrail, London



City CentreDC, Washington



Trafalgar Square, London



Bund Finance Center, Shanghai



New Slussen Masterplan, Stockholm



Santa Clara Masterplan



Quatermile Development, Edinburgh



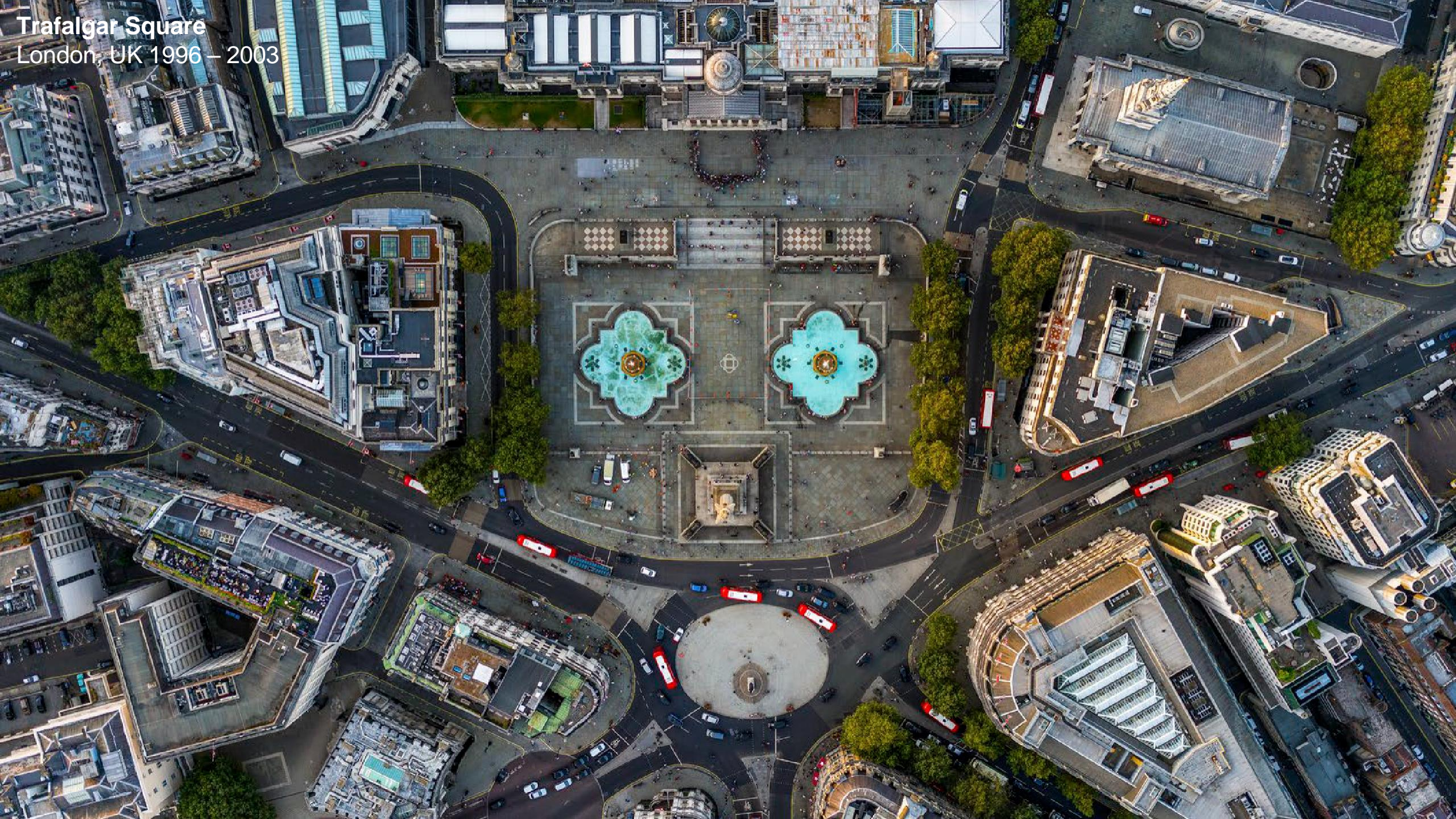
One Beverly Hills, Los Angeles



Amaravati Masterplan



Hellinikon Masterplan, Athens



Trafalgar Square
London, UK 1996 – 2003



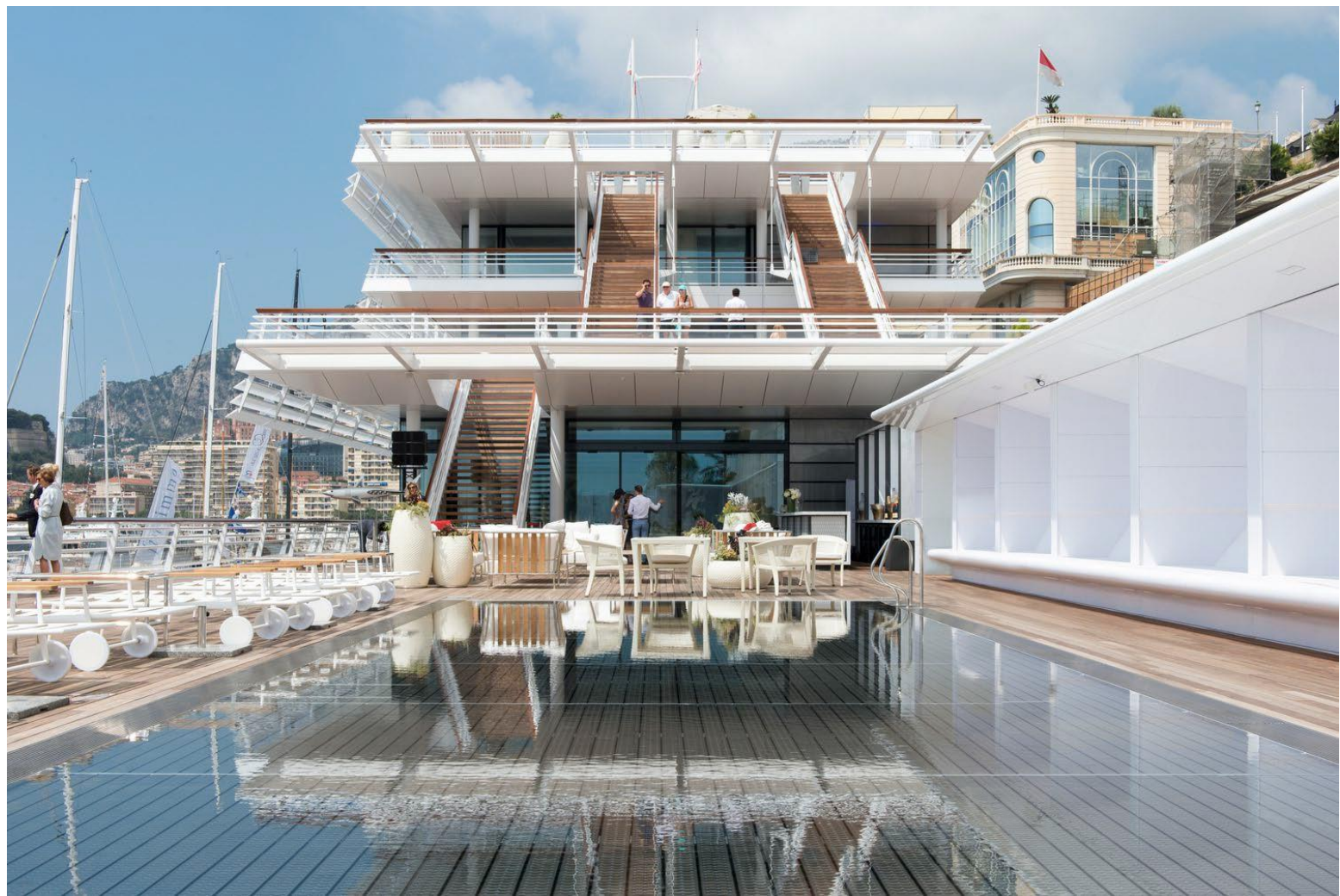


Millennium Bridge
London, UK 1996 – 2000





Yacht Club de Monaco
Monte Carlo, Monaco 2003 – 2014



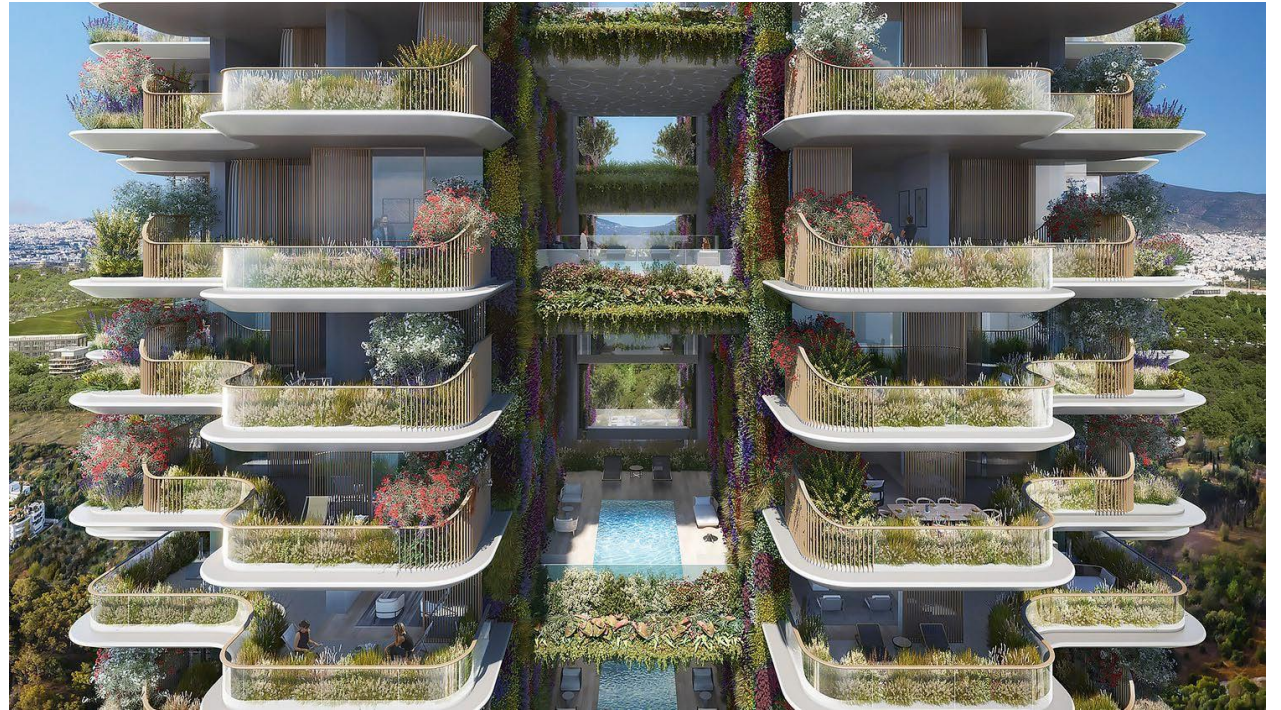




Ellinikon Masterplan
Athens, Greece 2013

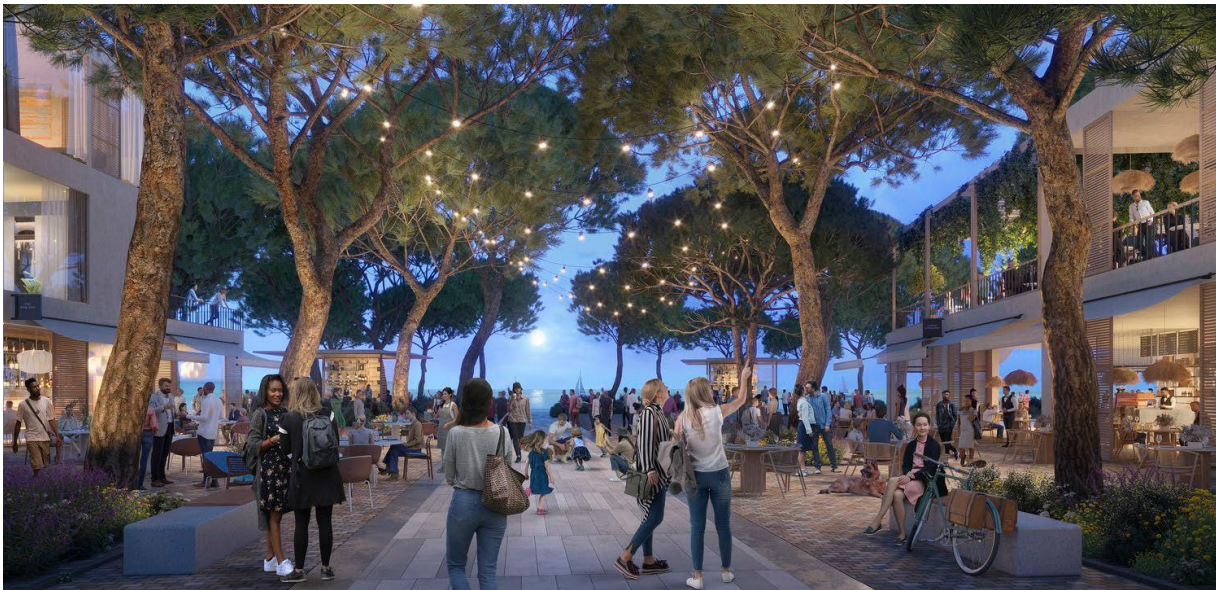








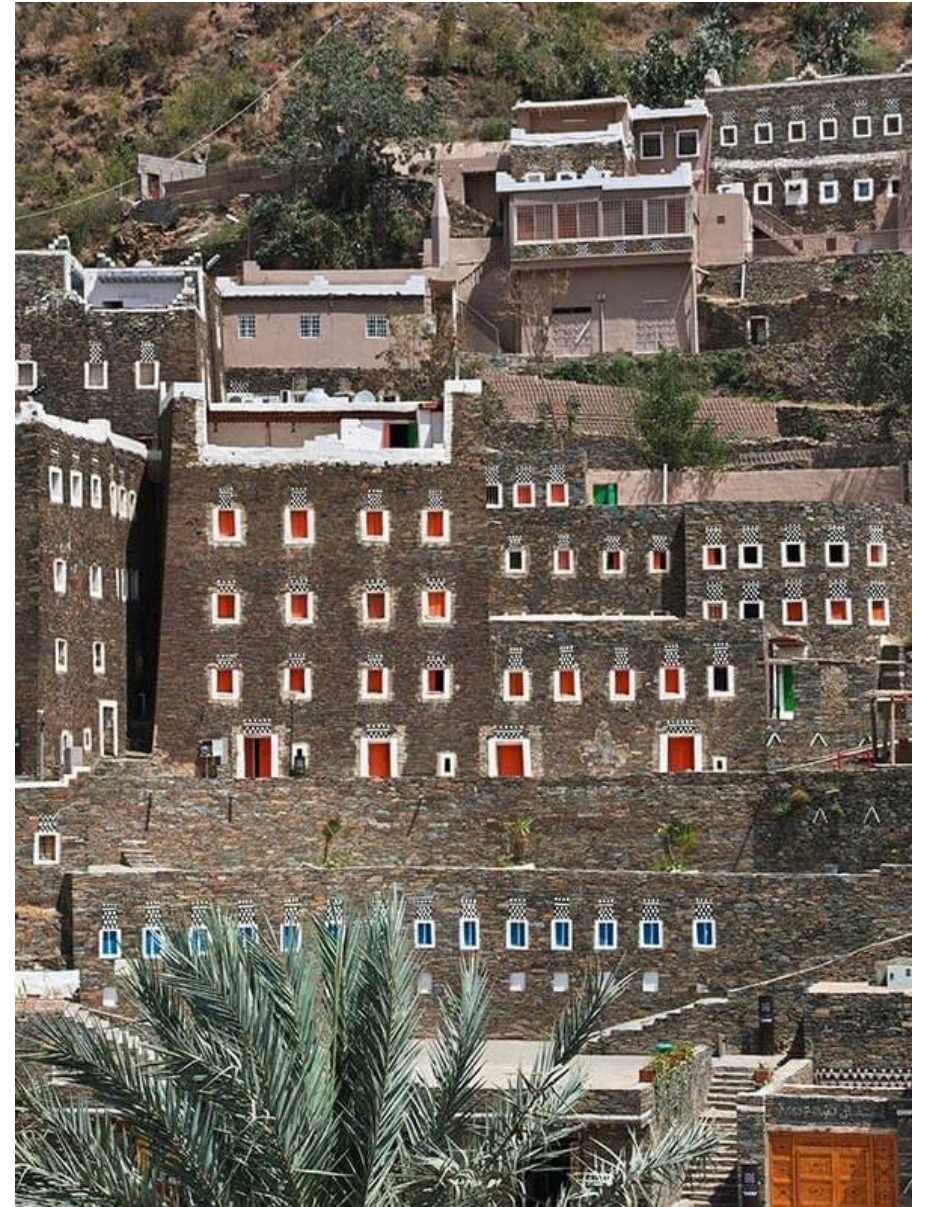
Land of Tomorrow
Larnaca, Cyprus 2022

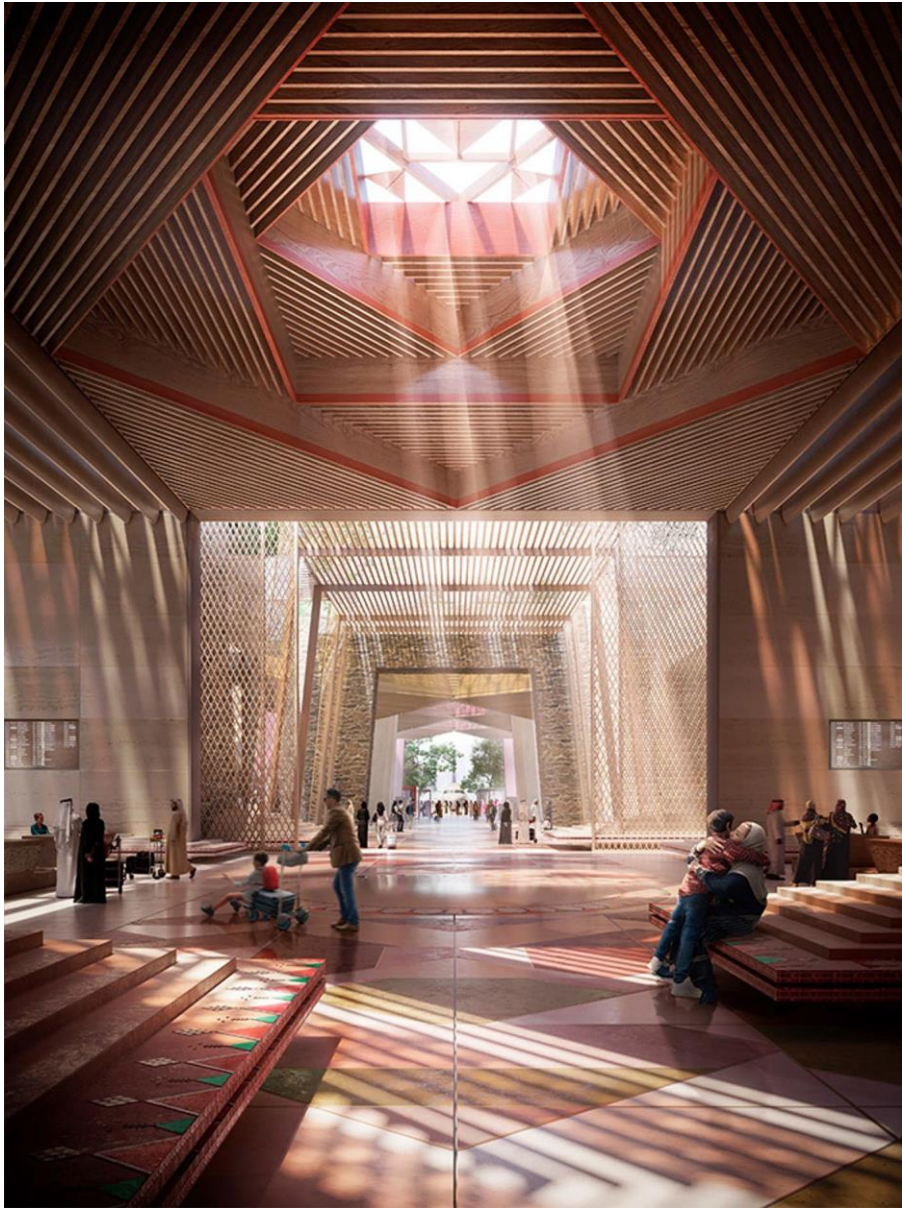




Abha International Airport
Abha, KSA 2024









Techo International Airport
Phnom Penh, Cambodia 2020-2025

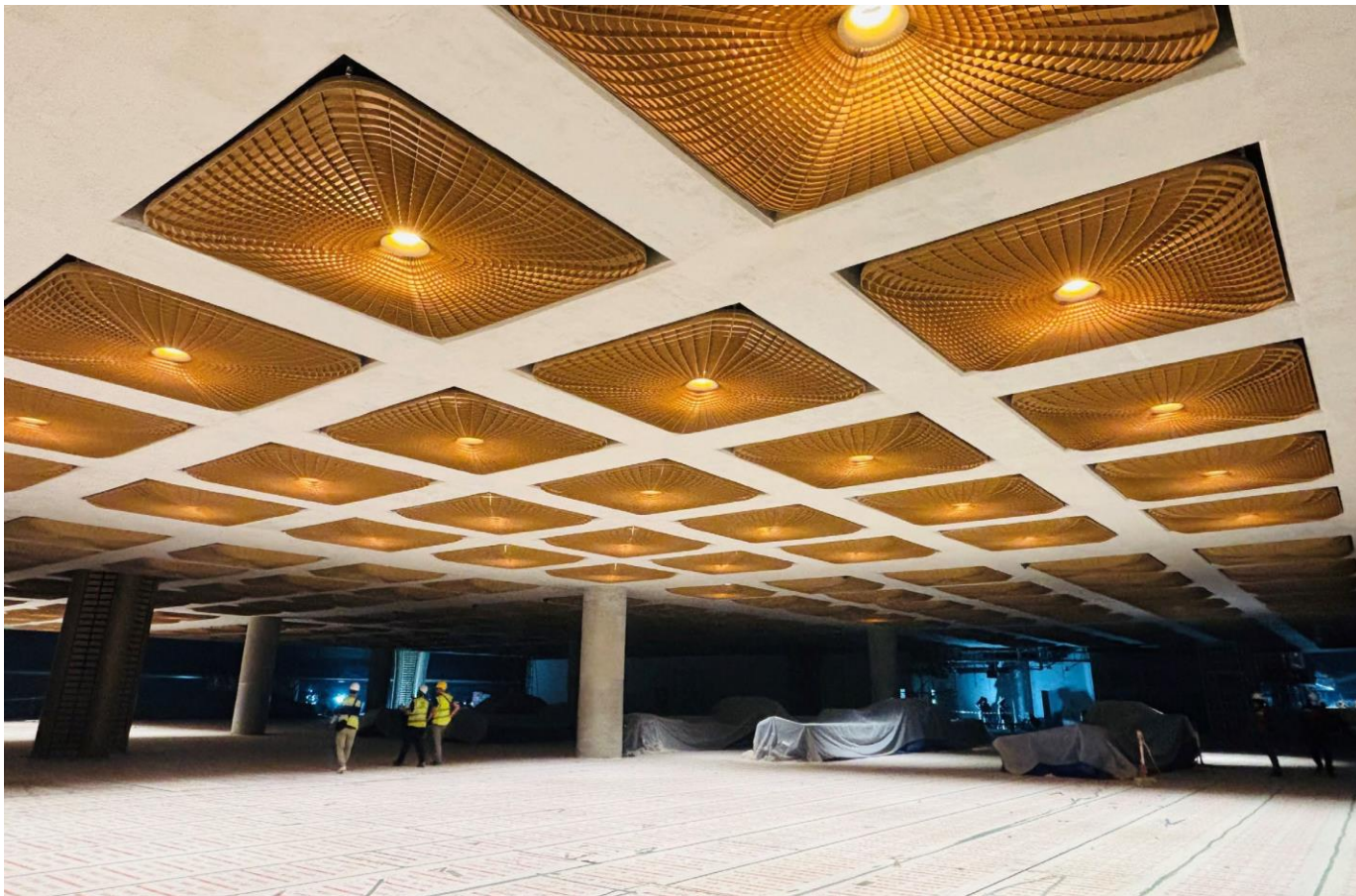




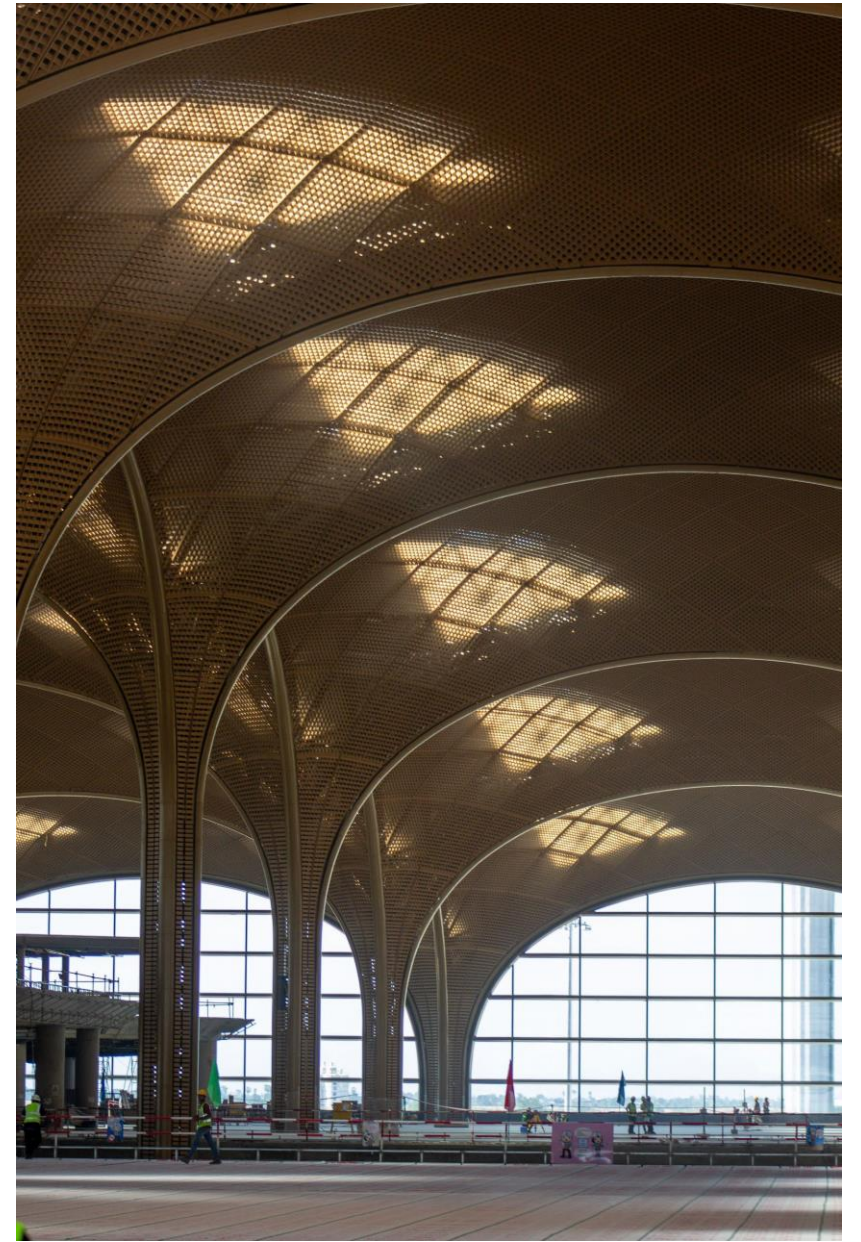














Thank You

